



## U6 Aural > Tonality II: Beyond Triads

Make sure you are happy with

- identifying major, minor, augmented and diminished triads
- find intervals from the root of a chord.

### Seventh Chords

If you take a basic triad and add a note that is a seventh above the root, you have a seventh chord. There are several different types of seventh chords, distinguished by both the type of triad and the type of seventh used:

C7
CMaj7
Cmin7
C°
Cø

dominant seventh
major seventh
minor seventh
diminished seventh
half-diminished seventh

- Seventh (or "dominant seventh") chord = major triad + minor seventh
- Major Seventh chord = major triad + major seventh
- Minor Seventh chord = minor triad + minor seventh
- Diminished Seventh chord = diminished triad + diminished seventh
- Half-diminished Seventh chord = diminished triad + minor seventh

### Added Notes, Suspensions, and Extensions

The seventh is not the only note you can add to a basic triad to get a new chord. You can continue to extend the chord by adding to the stack of thirds, or you can add any note you want. The most common additions and extensions add notes that are in the scale named by the chord.

Labelling a number as "sus" (suspended) implies that it replaces the chord tone immediately below it. Labelling it "add" implies that only that note is added.

C
Csus4
C6
Csus9
C9
Cadd13
C13
C13

The bass line of a piece of music is very important, and the composer/arranger often will want to specify what note should be the lowest-sounding in the chord. At the end of the chord name will be a slash followed by a note name, for example C/E. The note following the slash should be the bass note.

Em(add 11)
F13
G9
Asus4
F/C
Am/G
F6



## Altering Notes and Chords

If a note in the chord is not in the major or minor scale of the root of the chord, it is an altered note and makes the chord an altered chord. The alteration - for example "flat five" or "sharp nine" - is listed in the chord symbol.

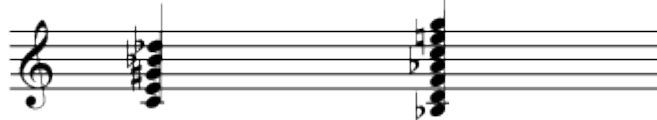
Two possible  
chord symbols  
for each chord:

$C7 \sharp 5 \flat 9$

$B \flat 13 \sharp 11$

$C7 +5$   
 $-9$

$B \flat 13 +11$



C dominant seventh  
with a sharp 5  
and flat nine

B flat thirteenth chord  
with a sharp eleven